

Product Finish: Brushed Nickel

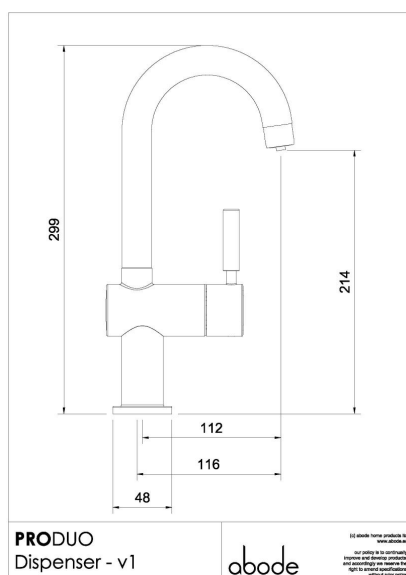
Product code: PT1121  
EAN13 barcode: 5060344156936



#### Product Features:

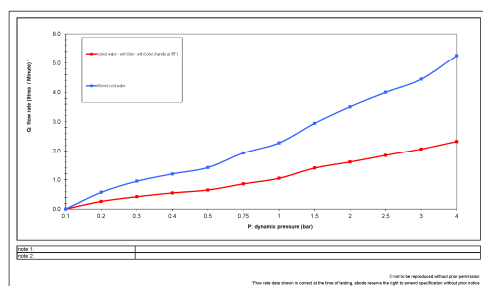
- Stylish dispenser delivering 98° (variable) filtered water
- Safety lock hot handle
- Scale inhibiting filter cartridge included
- 360° Swivel spout for maximum flexibility
- A modern design classic style
- 5 Year Warranty\*
- WRAS approved

#### Product dimensions:



- **Overall Height / projection:** 299 mm
- **Exit spout reach:** 116 mm
- **Exit spout height:** 217 mm
- **Base diameter(s):** 48 mm
- **Recommended hole diameter:** Ø35 mm
- **Max. surface depth:** 50 mm
- **Spout diameter:** 24 mm
- **Spout aerator size:** M22x1 Male

#### Product flow characteristics:



- **Min cold water pressure:** 1.0 (no filter) / 1.5 (with filter) bar
- **Min hot water pressure:** 0.00 bar
- **Recommended / Maximum domestic hot water temperature:** 46°C / 70°C
- **Part G - Mixed flow rate at 3 bar (litres / min):** 4.45
- **Control valve type:** 1 x Ceramic disc HT diverter
- **Product flow characteristics:** Dual flow
- **Aerator type:** Neoperl aerator honeycomb, dual flow (01580900001) with brass adaptor adaptor for centre channel
- **Hot and Cold inlet connections:** flexi hose
- **Non return valve(s):** None

#### Care instructions summary:

- Clean the product regularly as required, using a mild soap and damp cloth, do not use any other cleaners, regular cleaning will prevent the build-up of lime scale and dirt
- Residues of sink & worktop cleaners can also cause damage to the mixer tap, so rinse with clean water after using, avoid contact with any abrasives

#### Warranty Summary (Full details available on request):

- Mixer tap materials and workmanship defects warranted for 5 years
- Probol2 materials and workmanship defects warranted for 2 years
- Mixer tap valves and working parts warranted for 5 years
- Surface finish warranty defects warranted for 1 year
- All o-rings, hoses & gaskets warranted for 1 year



#### PROBOIL2 features:

- Compact size to fit discreetly into your base unit (Overall height 257mm, Width 217mm, Depth 175mm)
- Filtered water inlet
- 98 degree water outlet
- Safety steam vent to a standard dishwasher connection
- Removable tank lid for easy access, cleaning and descale
- 2 Litre tank
- Boiler can be floor or wall mounted
- UK manufactured boiler
- 2 Year Warranty\*
- WRAS approval pending

\*All temperatures quoted are measured within the tank of the boiler and actual spout exit temperature may vary dependant local conditions.

For further information refer to [proboil.co.uk](http://proboil.co.uk) and our user guide.

#### Our premium quality PROBOIL2 filter offers the following benefits:



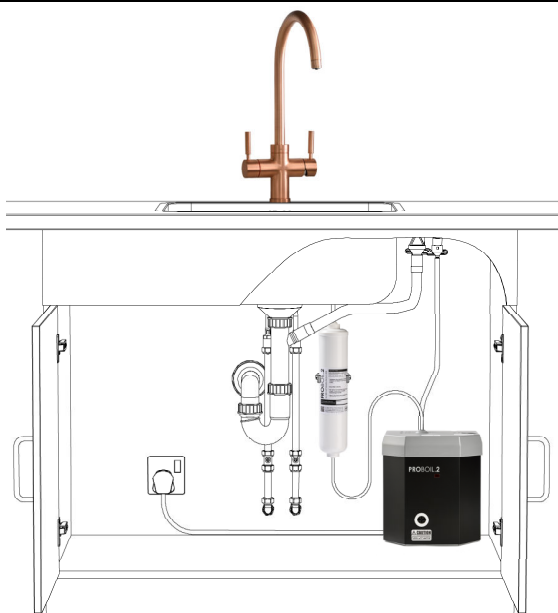
- Filtered 98°C drinking water, engineered specifically for hot water applications
- Included with every **PROBOIL2** system
- Recommended / Maximum replacement interval: 6 / 12 months
- Chlorine taste and odour reduction.
- Inbuilt corrosion protection
- Mineral adaption and scale reduction for protection
- Reduces scaling potential of the water
- WRAS approved



#### The complete package:

Each **PRONTEAU** system includes:

- A stylish **PRONTEAU** Dispenser
- **PROBOIL2** hot water boiler
- **PROBOIL2** scale control filter & assembly
- Connecting hoses and safety vent
- Comprehensive user and installation guide
- Waste Plumbing Attachments
- Nationwide professional maintenance and service support



# WATER THE WAY YOU WANT IT